

● When using the digital pad as a tablet

Mar.07

When using the digital pad as a tablet, various functions of the digital pad can be defined in the tablet control panel. The control panel settings are different in different operating system –Windows 2000/XP and Windows Vista. Please follow the exact instruction depends on your O/S.

In Windows 2000/XP



USB Tablet

1. Double-click the “USB Tablet” icon on the system tray.

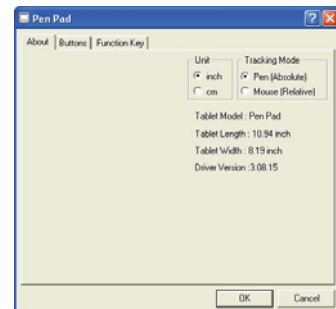
Double-click on the “USB Tablet” icon to bring up the settings window.

- If the icon does not display, please check and make sure: 1. the tablet driver is installed; 2. the USB cable is well connected at both ends. Unplug and re-plug the USB connector if you need to.
- The following functions take effect when the digital pad is used as a tablet. They are not functional when the digital pad is in ink-capture mode (when the digital pad is not connected with a computer).

2 Set unit and tracking mode.

Unit: You can select “inch” or “cm” as the default unit.

Tracking mode: You can set the pointer tracking mode to “Pen” or “Mouse”. In “Pen” mode, absolute coordinates are used. In “Mouse” mode, you can use the digital pen to move the pointer in the same way as using a mouse.

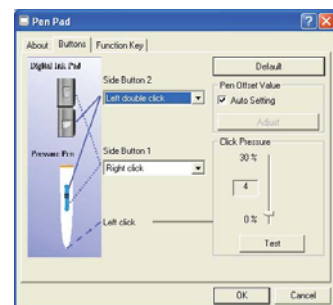


- You can update the driver by downloading new driver from the Internet.

3 Mouse-clicking functions and click pressure.

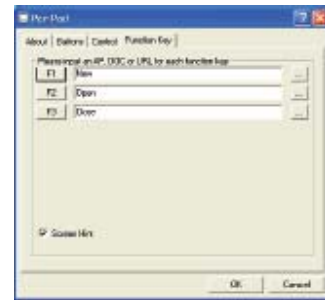
You can change the mouse-click simulation settings here. You can also re-calibrate the pen offset value or reset the pressure of pen tip click according to your preference.

- If you are using a regular tablet pen, the settings of the pen buttons are also adjustable in the control panel.
- If you change the pen you are using or the pressure of the pen appears abnormal, please cancel the “Auto Setting” and select “Adjust”.



4 Hot key setting.

Two of the five buttons on the digital pad are used for mouse-clicking; the rest three can be programmed here. By default they will create, open, or close a document when using an application. By a single click of the setting button, you can change their functions to run a program, link to an URL, or simulate a specific keyboard button.



In Windows Vista

In Windows Vista, there are two modes as your alternative in accord with your application need, Ink mode and Graphic mode. You can switch the different modes on the control panel according to your demand applications.

❖ Inking mode

Following Microsoft digitizer driver to support the pen features in Windows Vista and Office 2007, such like Handwriting recognition panel, and starting inking function in Office 2007 Word, Excel, Outlook and OneNote.



USB Tablet

1. Double-click the “USB Tablet” icon on the system tray.

Double-click on the “USB Tablet” icon to bring up the settings window.

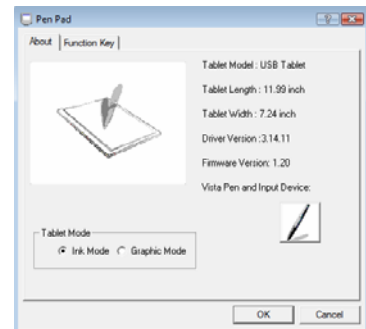
- If the icon does not display, please check and make sure: 1. the tablet driver is installed; 2. the USB cable is well connected at both ends. Unplug and re-plug the USB connector if you need to.
- The following functions take effect when the digital pad is used as a tablet. They are not functional when the digital pad is in ink-capture mode (when the digital pad is not connected with a computer).

2 Set unit and tracking mode.

Tablet information: Such as Tablet Model, Tablet Length, Tablet Width, Driver Version, Firmware Version and so on.

Vista Pen and Input Device: Click the icon to launch *Pen and Input Device* dialogue built in Windows Vista.

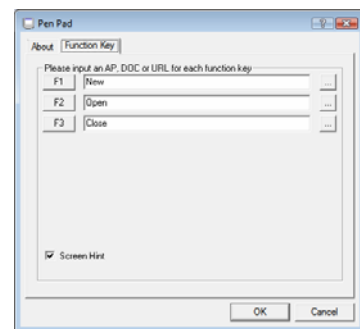
Tablet mode: You can switch between *Ink Mode* and *Graphic Mode* in accord with your application need.



- You can update the driver by downloading new driver from the Internet.

3 Hot key setting.

The right three buttons on the digital pad can be programmed here. By default they will create, open, or close a document when using an application. By a single click of the setting button, you can change their functions to run a program, link to an URL, or simulate a specific keyboard button.



❖. Graphic mode

Following most of Graphic software required driver structure. In this mode, multiple screen function is supported.



1 Double-click the “USB Tablet” icon on the system tray. USB Tablet
Double-click on the “USB Tablet” icon to bring up the settings window.

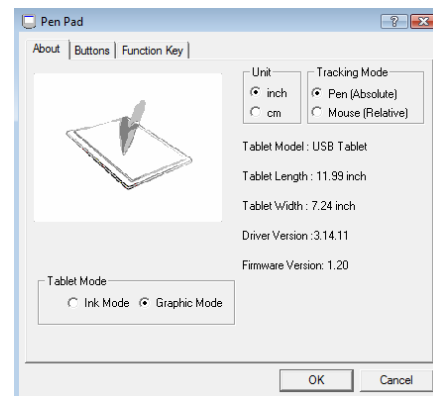
- If the icon does not display, please check and make sure: 1. the tablet driver is installed; 2. the USB cable is well connected at both ends. Unplug and re-plug the USB connector if you need to.
- The following functions take effect when the digital pad is used as a tablet. They are not functional when the digital pad is in ink-capture mode (when the digital pad is not connected with a computer).

2 Set unit and tracking mode.

Unit: You can select “inch” or “cm” as the default unit.

Tracking mode: You can set the pointer tracking mode to “Pen” or “Mouse”. In “Pen” mode, absolute coordinates are used. In “Mouse” mode, you can use the digital pen to move the pointer in the same way as using a mouse.

Tablet mode: You can switch between *Ink Mode* and *Graphic Mode* in accord with your application need.

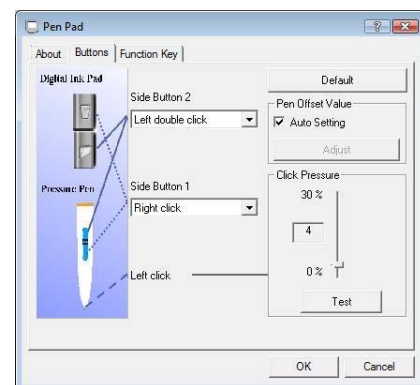


- You can update the driver by downloading new driver from the Internet.

3 Mouse-clicking functions and click pressure.

You can change the mouse-click simulation settings here. You can also re-calibrate the pen offset value or reset the pressure of pen tip click according to your preference.

- If you are using a regular tablet pen, the settings of the pen buttons are also adjustable in the control penal.
- If you change the pen you are using or the pressure of the pen appears abnormal, please cancel the “Auto Setting” and select “Adjust”.



4 Hot key setting.

The right three buttons on the digital pad can be programmed here. By default they will create, open, or close a document when using an application. By a single click of the setting button, you can change their functions to run a program, link to an URL, or simulate a specific keyboard button.

